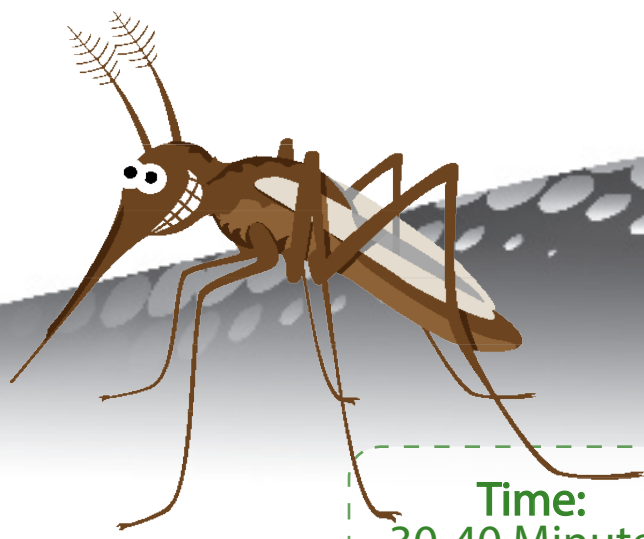


Who Eats Who?

Project & Assembly Directions



Objective

Students will understand that mosquitoes are an important food source for many other animals.

Time:
30-40 Minutes

Level:
Primary

Materials

1. student pages printed on thick paper
2. brass fasteners
3. crayons or markers
4. scissors



(Sample Finished Product)

Content

Many animals feed on mosquitoes at the larval, pupal and adult stages. As larvae and pupae, mosquitoes may be eaten by water beetles, dragonfly nymphs, ducks and many kinds of fish. As adults, mosquitoes may be eaten by dragonflies, frogs, toads, nighthawks, swallows, purple martins and many other animals. This interdependence of mosquitoes with other organisms in the environment is very important. Mosquito control personnel recognize the value of this interdependence and utilize biological control agents to control mosquitoes whenever possible. For instance, fish populations in larger ditches, ponds or lakes will naturally prey on mosquito larvae. Rarely do larval populations increase to the level where mosquito control would become necessary in these permanent bodies of water. Exceptions may occur in heavily vegetated areas where the fish can't get through to the larvae or during times when areas become so wet that there are not enough predators to control mosquito populations.



Lee County
Mosquito Education

Check out our website at www.MosquitoEd.com

Design by Think Tank Solutions: www.thinktank360.com

Who Eats Who?

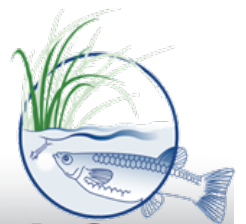
Project & Assembly Directions

Procedure

1. Print the two pages for the wheel for each child on thick paper.
2. Cut out the mosquito wheel along the dotted line.
3. Cut out the window along the dotted line.
4. Fasten the wheel to the full page with a brass fastener exactly in the center.
5. Spin your wheel to see and show animals that feed on adult and larval mosquitoes.

Sunshine State Standards

To view the Florida Next Generation Sunshine State Standards for this activity, visit our website www.Mosquitoed.com and click on the "Activities" link.



Lee County
Mosquito Education

Who Eats Who?

Wheel Page

Cut Here

Who Eats Who?

Cut Here



Who Eats Who?

Name _____

