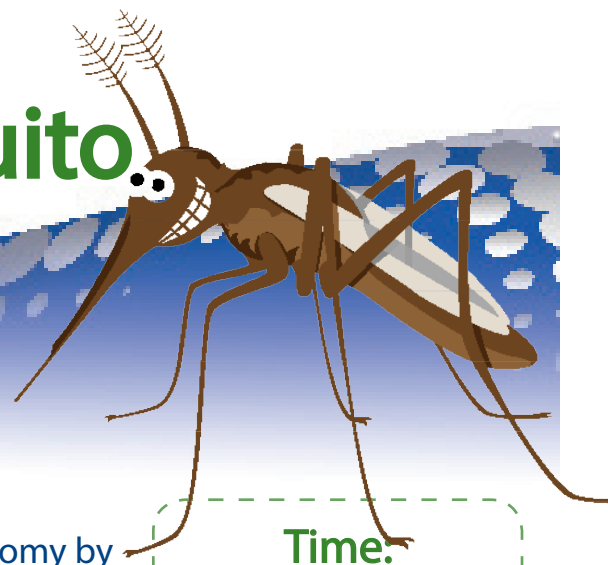


Make Your Own Mosquito

Project & Assembly Directions



Objective

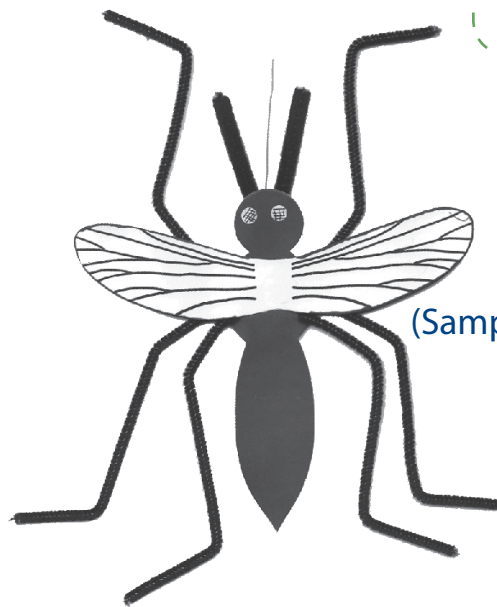
Students will learn the different parts of the mosquito anatomy by assembling their own mosquito replica.

Time:
30-40 Minutes

Level:
Intermediate

Materials

1. 1 sheet of thick paper
2. Black markers
3. Thin wire for Proboscis
4. Black pipe cleaners
5. Glue
6. 5/16" round adhesive labels
7. Push pin or small hole punch
8. Stencils-body and wings
9. Pencil
10. Scissors



(Sample Finished Product)

Content

The mosquito's body is divided into three parts, the head, thorax, and abdomen. The head consists of two large compound eyes that have numerous lenses. The head has two antennae, which act as "feelers" on the mosquitoes, also helping it sense it's direction. The mouth is a tube-like structure, called the proboscis. Both the male and female proboscis is used to sip plant juices, while the female's proboscis is used to bite into flesh and feed on blood.

The head connects to the thorax with a very thin and short neck. The thorax is shaped somewhat like a triangle, with color patterns that help scientists identify them. The thorax has six legs coming out. Each leg has a pair of tiny claws, which help to balance the



Lee County
Mosquito Education

Check out our website at www.MosquitoEd.com

Design by Think Tank Solutions: www.thinktank360.com

Make Your Own Mosquito

Content Continued

mosquito when climbing, or hanging upside-down on objects. The wings are also located on the thorax.

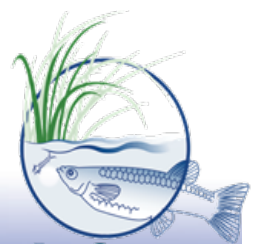
Connected at the end of the thorax is the abdomen which is like a long and slender tube. There are spiracles along the side of the body which the mosquito breathes through. The abdomen has eight pairs of spiracles, while the thorax has only two. The air flows in through these spiracles and gets to the whole body by way of tubes inside.

Procedure

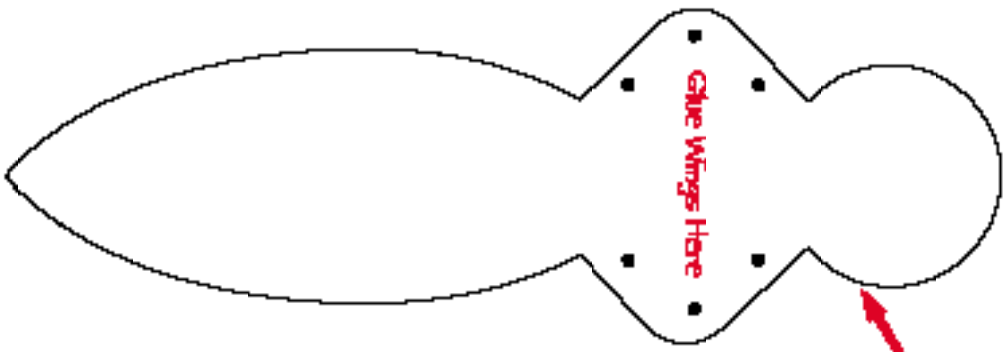
1. Print the pages with the mosquito body and wing for each child on thick paper.
2. Cut out mosquito body.
3. Label the 3 main parts of the mosquito body on one side of the mosquito body. Color the other side
black with markers or crayons.
4. Bend body along center (see diagram).
5. Push 6 holes through the thorax with a push pin where the dark circles are (see diagram).
6. Carefully push three pipe cleaners through the holes (see diagram).
7. Glue the pipe cleaners in place. Put a dab of glue next to each hole to secure pipe cleaners to body.
8. Glue antennae and proboscis wire in place on the bottom side of the head (see diagram).
9. Let dry thoroughly.
10. Stick two adhesive labels on the top of the head for eyes.
11. Draw criss cross pattern on the eyes to illustrate the multiple lenses making up its compound eye.
12. Place mosquito on bending page and bend the legs according to the illustration.
13. Cut wings out from the pattern and glue them to the body marked "glue wings here".

Sunshine State Standards

To view the Florida Next Generation Sunshine State Standards for this activity, visit our website www.Mosquitoed.com and click on the "Activities" link.

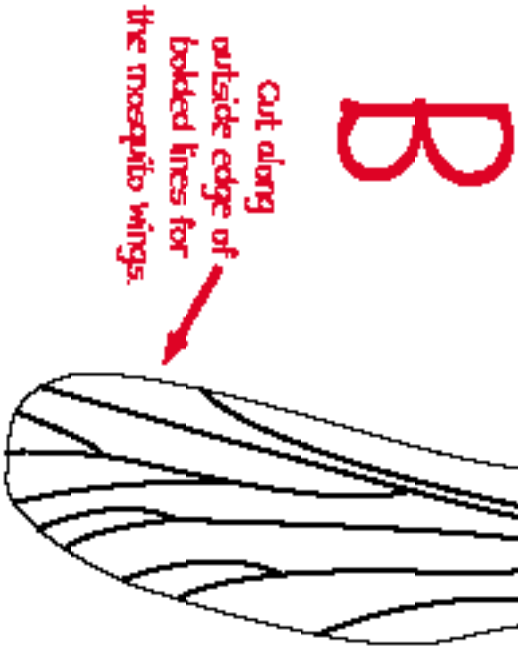


Lee County
Mosquito Education



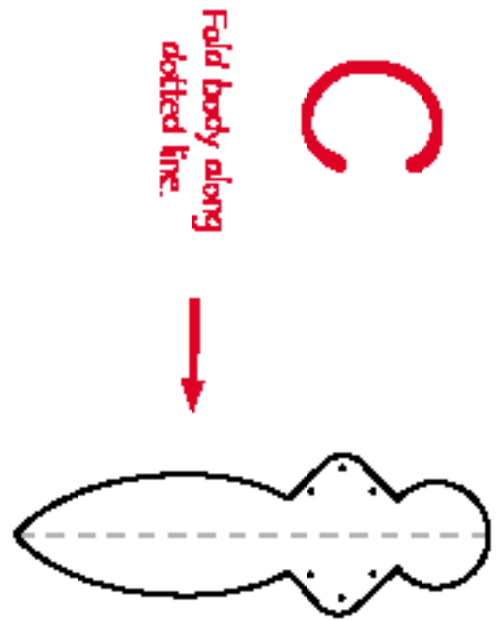
Cut along
outside edge of
bolded lines for
the mosquito body.

A



Cut along
outside edge of
bolded lines for
the mosquito wings.

B



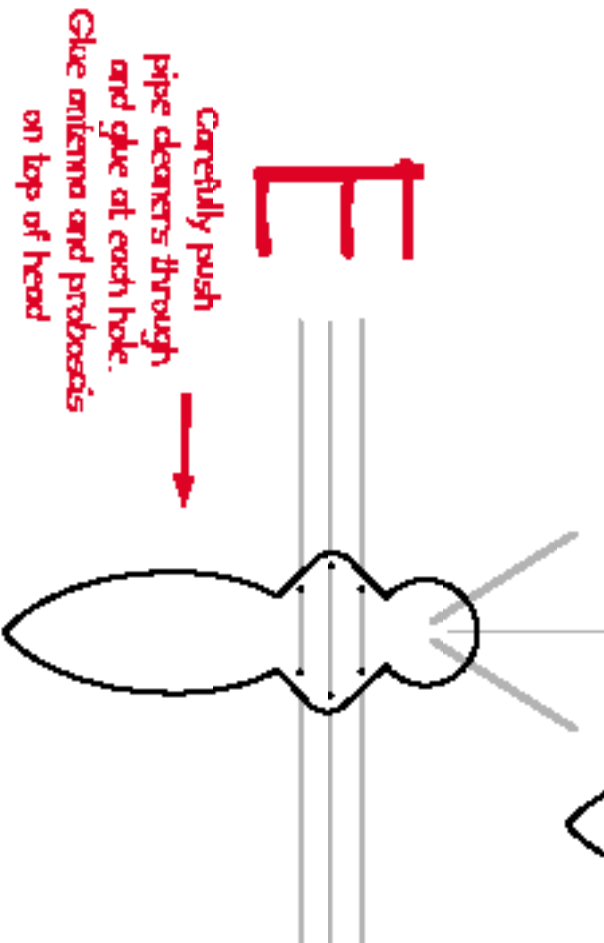
Fold body along
dotted line.

C



Punch out holes where
the circles are
marked on the body.

D



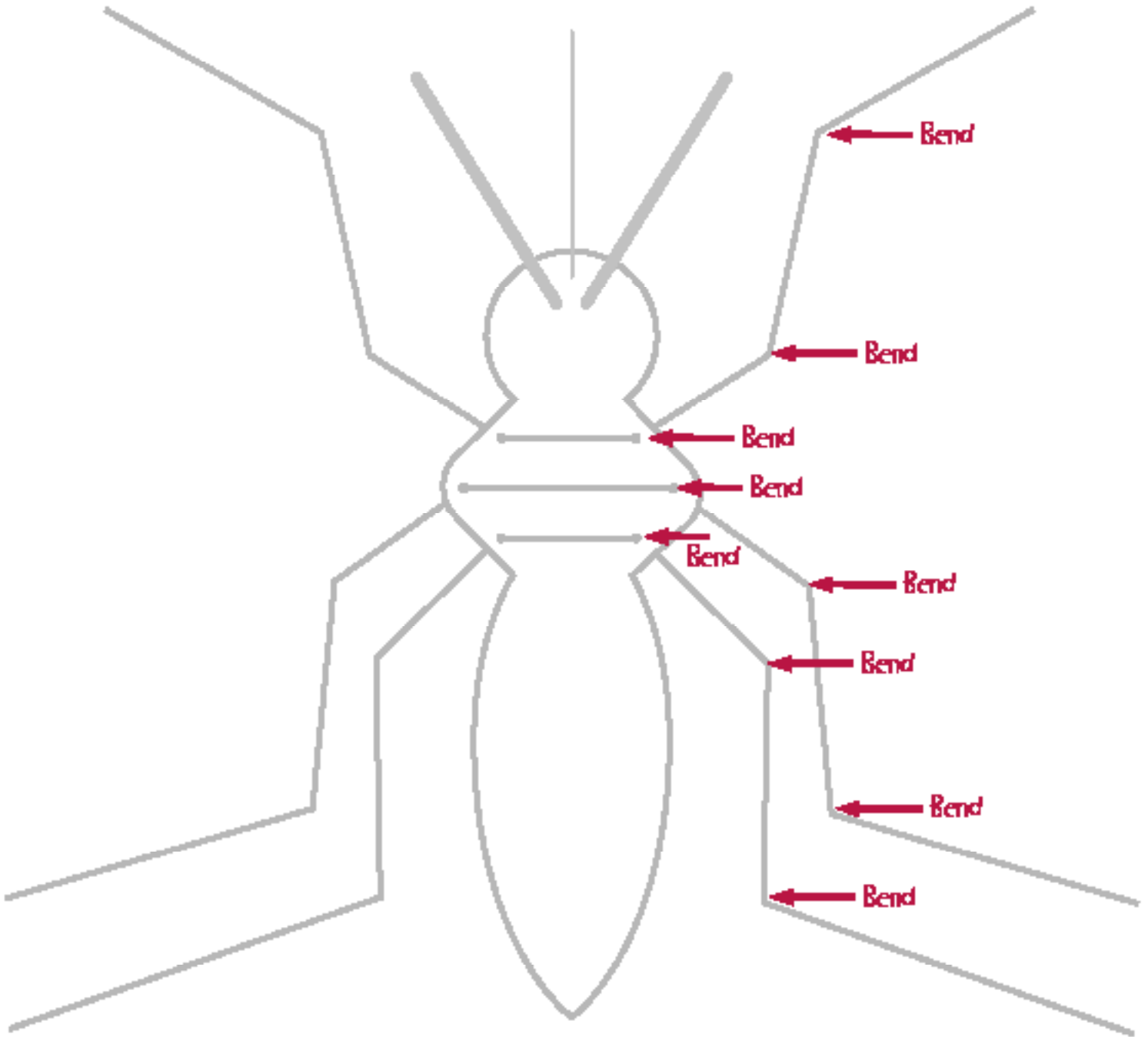
Carefully push
pipe cleaners through
and glue at each hole.
Glue antenna and proboscis
on top of head

E



F

Place Your mosquito body with inserted legs on top of template below. Bend legs to match the template.



Lee County
Mosquito Education