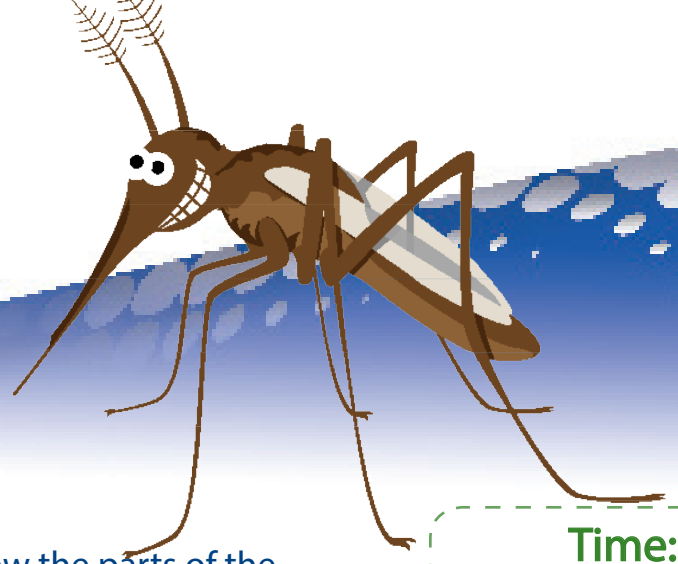


# Food Chain

## Project & Assembly Directions



### Objective

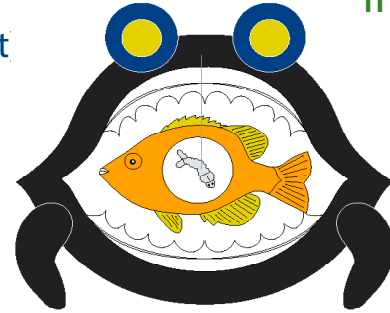
Students will learn what a food chain is and how the parts of the chain are interdependent. They will create a mosquito related food chain.

**Time:**  
30-40 Minutes

**Level:**  
Primary &  
Intermediate

### Materials

1. White Card Stock Paper (3-8.5 x 11 sheets per student)
2. Crayons, colored pencils, or markers
3. Fishing line (18 inches per student)
4. Glue (preferably hot glue or craft glue)



(Sample Finished Product)

### Content

All living things depend on each other for food. A food chain shows how each living thing gets its food. Many animals get their food from plants, while other animals get their food from other animals. If one plant or animal's source of food disappears many other plants or animals in the food chain are impacted.

### Procedure

1. Copy the patterns onto white card stock paper for each student.
2. Find the large mouth labeled "A." Color the mouth on both sides. Cut the outer edge of the mouth, then cut out the mouth opening marked "Cut Here."
3. Find the four large circles labeled "B." Color the large circles and cut them out.
4. Find the four small circles labeled "C." Color the small circles and cut them out.
5. Find the four fish fins labeled "D." Color the fins and cut them out.
6. Find the small fish labeled "E." Color the fish. Cut out the fish along the outer edge. Cut out the center



Check out our website at [www.MosquitoEd.com](http://www.MosquitoEd.com)

Design by Think Tank Solutions: [www.thinktank360.com](http://www.thinktank360.com)

# Food Chain

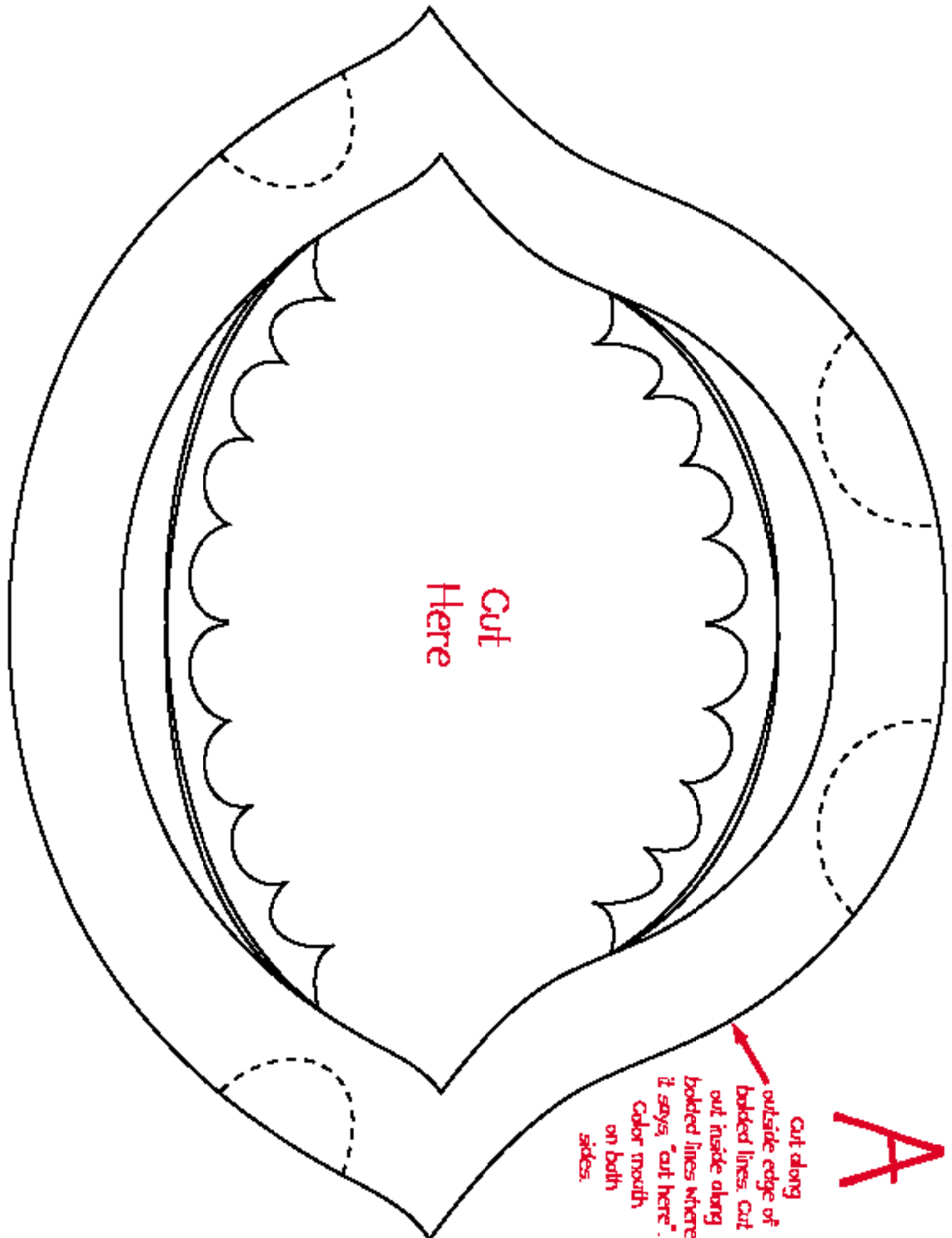
## Project & Assembly Directions

- circle of the fish labeled "Cut Here."
7. Find the small larva labeled "F." Color the larva. Cut out the larva along the outer edge.
  8. Glue the small circle in the center of each large eye circle.
  9. Glue the two big circles on the top of the mouth where the dotted lines are located.
  10. Turn the mouth over to the backside. Glue the other two eyes to the top of the mouth so that  
they line up with the eyes on the other side.
  11. Turn the fish mouth over to the front side.
  12. Glue two of the fins to the bottom of the mouth where the dotted lines are located.
  13. Turn the mouth over to the back side. Glue the other two fins to the bottom of the mouth so  
that they line up with the fins on the other side.
  14. Place the small fish into the center of the mouth of the large fish.
  15. Place the larva into the center circle of the small fish.
  16. Lay your piece of fishing line vertically on top of your food chain so that it touches all three pieces with  
the excess of the line at the top of the large mouth.
  17. Place dabs of glue to hold the fishing line in place on all three pieces.
  18. Let glue dry thoroughly.
  19. Hang your food chain from the ceiling!

## Sunshine State Standards

To view the Florida Next Generation Sunshine State Standards for this activity, visit our website [www.Mosquitoed.com](http://www.Mosquitoed.com) and click on the "Activities" link.



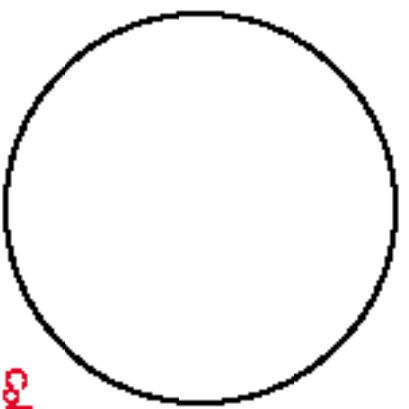


Cut Here

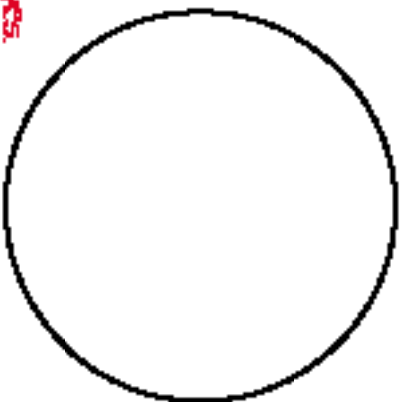
Cut along outside edge of bolded lines. Cut out inside along bolded lines where it says, "cut here". Color mouth on both sides.

A

**B**



Color eyes.  
Cut along  
bolded lines.

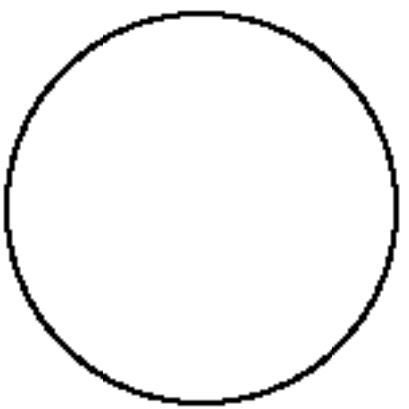


**D**

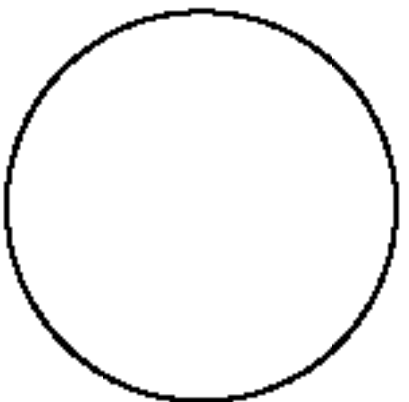


Color fins.  
Cut along  
bolded lines.

**C**

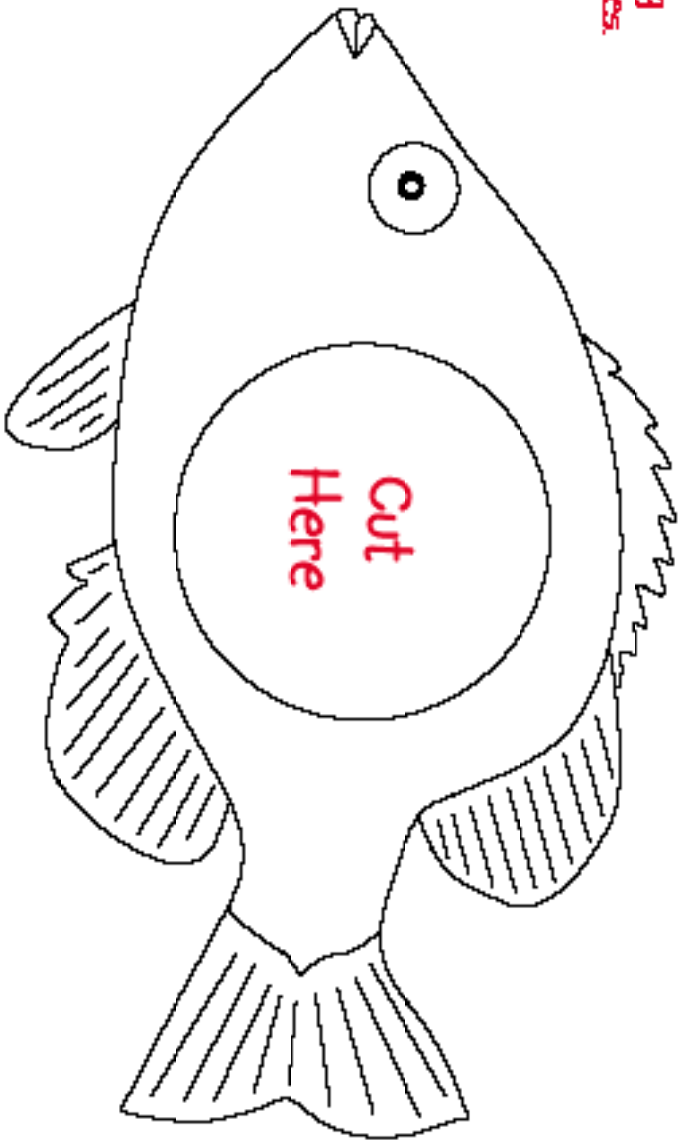


Color circles.  
Cut along  
bolded lines.



E

Color the fish.  
Cut along  
bolder lines.



F

Color the  
larva.